

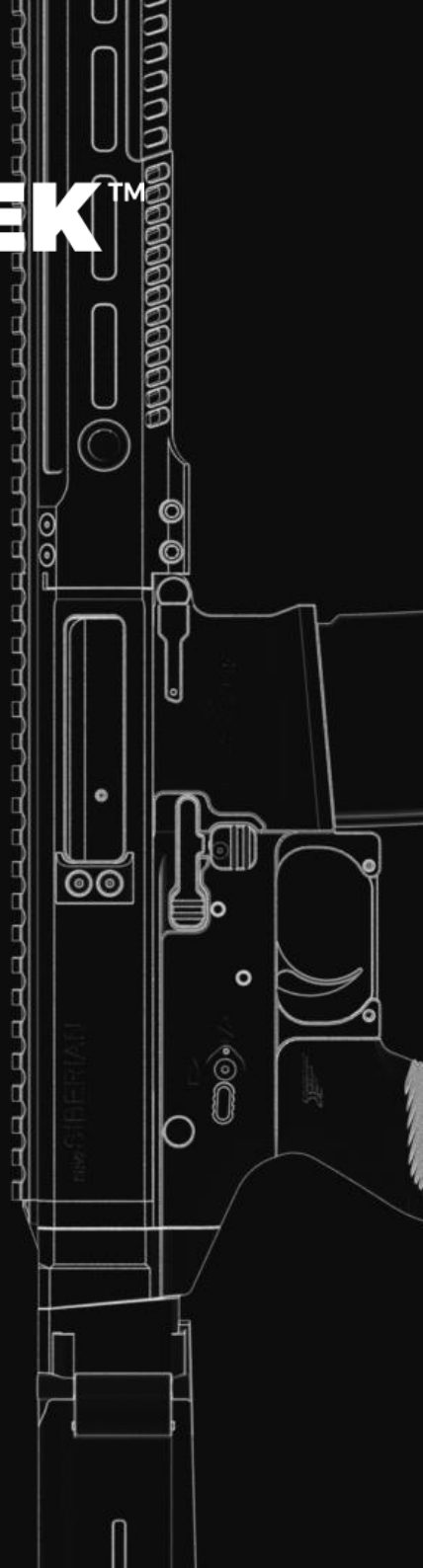


**BLACKCREEK™**

**SRV2 SIBERIAN**

---

**OPERATOR'S  
MANUAL**









## WARNING

When picking up your firearm for the first time, immediately ensure you prove it is safe. Point the firearm in a safe direction, attempt to put the firearm on safe by putting the safety selector into the SAFE position. Remove the magazine and pull the bolt carrier back into the open position. With the bolt completely to the rear, visually and physically inspect the chamber and feed path to ensure it is empty. Once you have confirmed that there are no rounds or other obstructions in the firearm, push the bolt carrier closed. You have now made your firearm safe to handle.

### GENERAL SAFETY

---

BlackCreek (BCL) has no control over the use of your firearm and shall not be responsible for injury, death, or damage to property resulting from the intentional or accidental discharge of your firearm. Safety is your responsibility and you are required to follow the firearm safety rules at all times:

- Always treat your firearm as though it is loaded.
- Never point your firearm at anything other than the desired target.
- Keep your finger off the trigger until you are ready to shoot.
- Ensure you know what your target is and what lies beyond.

In addition to the firearms safety rules, it is your responsibility to ensure the following:

- Always wear hearing and eye protection when using your firearm.
- Always use your firearm in a well ventilated area to mitigate your exposure to lead and other contaminants.
- Visually inspect your firearm prior to use to ensure there are no obstructions or debris in the barrel, chamber, or action.
- Ensure your firearm is clean and well lubricated prior to use.
- Always carry your rifle in a way that you can control the muzzle in the event of a slip or fall.
- Always use proper, factory-made ammunition of the correct caliber, and ensure it is clean and dry.
- Never shoot directly into hard surfaces, such as rock or water, as bullets can ricochet.
- Do not perform unauthorized modifications or alterations to your firearm.
- Always store your firearm as per the applicable firearms laws and/or regulations.
- Never allow anyone to operate your firearm without reading the operator's manual first.
- Never operate your firearm under the influence of drugs or alcohol.

# **CONTENTS**

<b>GENERAL SAFETY</b>	<b>1</b>
<b>1.0 OVERVIEW</b>	<b>3</b>
1.1 Purpose	
1.2 Chamber	
1.3 Barrel	
1.4 Action	
1.5 Chassis	
1.6 Trigger	
1.7 Barrel Shroud	
1.8 Stock	
1.9 Pistol Grip	
<b>2.0 PHYSICAL DATA</b>	<b>4</b>
<b>3.0 NOMENCLATURE</b>	<b>5</b>
<b>4.0 CARE &amp; CLEANING</b>	<b>7</b>
4.1 Lubricants	4.5 Lubrication
4.2 Field Stripping	4.6 Assembly
4.3 Further Disassembly	4.7 Gas System Cleaning
4.4 Cleaning	
<b>5.0 FUNCTION TEST</b>	<b>16</b>
<b>6.0 SAFETY SELECTOR</b>	<b>16</b>
<b>7.0 FIREARM OPERATION</b>	<b>16</b>
7.1 Proving the Firearm Safe	
7.2 Loading	
7.3 Ready	
7.4 Unloading	
7.5 Immediate Action on Malfunction	
<b>8.0 TROUBLESHOOTING</b>	<b>19</b>
<b>9.0 MAGAZINES</b>	<b>20</b>
<b>10.0 LIMITED LIFETIME WARRANTY</b>	<b>20</b>
<b>11.0 SPARE PARTS DIAGRAMS</b>	<b>21</b>

# 1.0 OVERVIEW

---

The SRV2 Siberian is a gas operated semi-automatic rifle that can be chambered in .223 Wylde, .300AAC, and 7.62x39. The SRV2 Siberian is compatible with AR15 magazines.

## 1.1 PURPOSE

---

The SRV2 Siberian is a utility rifle designed to offer a semi-automatic firearm that can be used for target shooting, hunting or other professional and recreational shooting for distances within 600 yards.

## 1.2 CHAMBER

---

The SRV2 Siberian can be chambered in .223 Wylde, .300AAC, and 7.62x39. More calibers may become available in the future.

## 1.3 BARREL

---

The SRV2 Siberian uses standard AR15 barrels, and ship in 9.5", 12.5", 16.5" and 18.6" lengths. Barrels are made from button cut, match grade 4150 Chromoly blanks. Twist rates are determined by the caliber, and are marked on the barrel.

SRV2 barrels are threaded with a 1/2" - 28 (.22CAL) or 5/8" - 24 (.30CAL) muzzle thread, allowing for aftermarket muzzle devices to be added.

Barrel life expectancy depends on the number of rounds that have been fired and the rate at which they have been fired at. Firing at controlled rates will allow for minimal accuracy loss starting at 10,000 rounds.

The SRV2 Siberian uses a gas system with a 0.750" diameter gas block journal.

## 1.4 ACTION

---

The SRV2 Siberian is actuated by a short stroke piston system. The length of gas operating system is determined by the barrel length.

The bolt is manufactured from 9310 steel and is processed through a proprietary heat treatment process that includes carburization, black oxide, and cryogenic processes. All parts are machined on cutting edge CNC machinery allowing for top notch precision and endless repeatability.

Standard AR compatible components are used in the bolt, including the extractor assembly, ejector assembly, however, the bolt body is not compatible with AR15 firearms.

## 1.5 RECEIVER SET

---

The SRV2 Siberian has an aluminum receiver set, constructed from 6061-T6 aluminum. The receiver set is finished with a Type III Class 2 Hardcoat Anodize. The receiver set is also offered with an additional Cerakote finish in a select number of colours.

## 1.6 TRIGGER

---

The SRV2 Siberian comes with a standard Milspec AR15 Trigger group with a pull weight of approximately 5.5lb of pull.

## 1.7 HANDGUARD

---

The SRV2 Siberian handguard has an integrated picatinny top rail, as well as MLOK accessory mounting on the sides and bottom. It is finished with a Type III Class 2 hard coat anodize. It is also offered with an additional Cerakote finish in a select number of colours.

The SRV2 Siberian does not use a standard picatinny rail height due to the operating gas system. Because of this, it is unlikely that aftermarket handguards and barrel nuts will work properly with the SRV2 Siberian.

## 1.8 STOCK

---

The SRV2 Siberian utilizes a standard picatinny stock mounting system which allows for multiple different styles of stocks to be adapted to the receiver set. The SRV2 comes standard with a Magpul Zhukov Stock.

## 1.9 PISTOL GRIP

---

The SRV2 Siberian comes standard with a Black Creek Pistol Grip. The SRV2 Siberian is compatible with AR15 pistol grips.

# 2.0 PHYSICAL DATA

---

Barrel Length	Overall Length Folded	Overall Length Extended	Weight
9.5"	19.90"	27.40"-29.90"	6.2lb
12.5"	22.90"	30.40"-32.90"	6.5lb
16.5"	26.90"	34.40"-36.90"	7.1lb
18.6"	29.00"	36.50"-39.00"	7.4lb

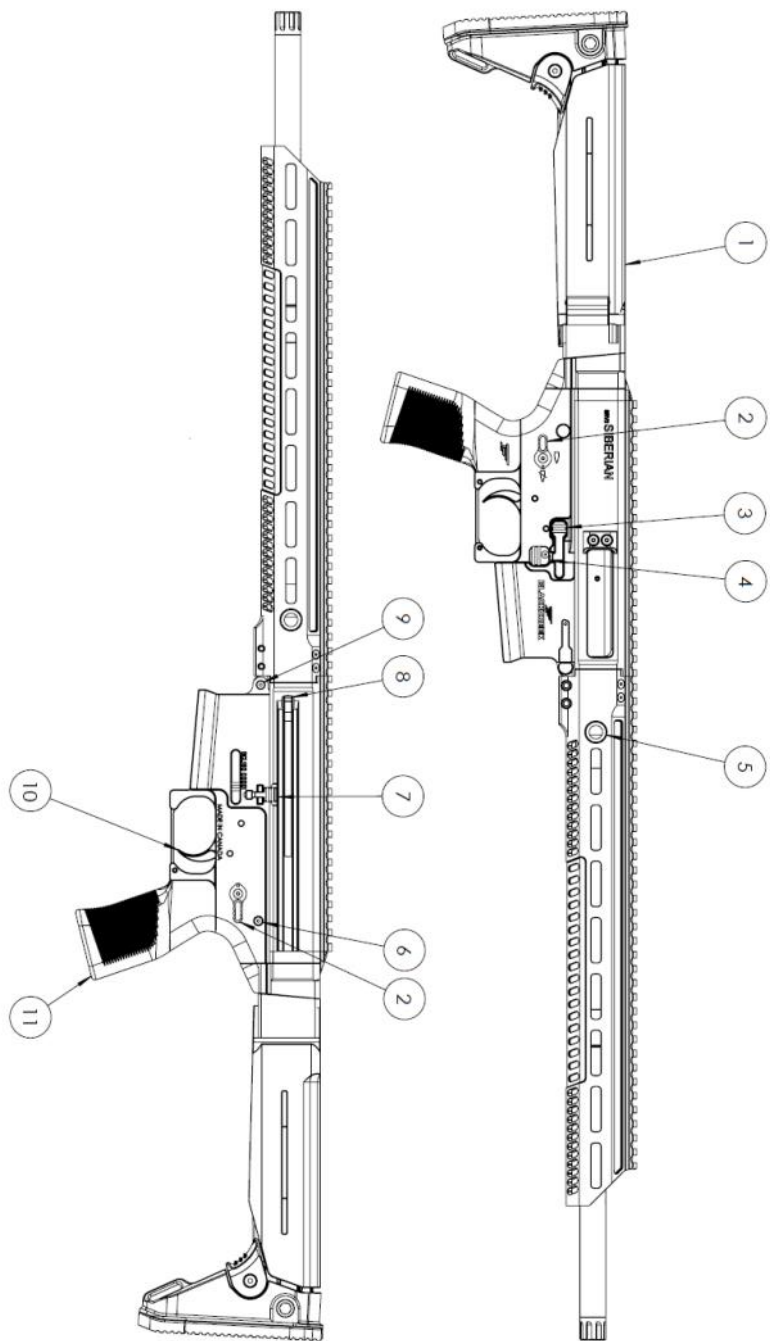
## 3.0 NOMENCLATURE

---

The following drawings and associated parts list provide a visual reference to the parts of the SRV2 Siberian described in the manual.

1. Stock (Magpul Zhukov shown)
2. Safety Selector (shown in safe position)
3. Ambidextrous Bolt Release Button
4. Magazine Release Button
5. QD Sling Socket
6. Takedown Pin
7. Bolt Catch
8. Non-Reciprocating Charging Handle
9. Pivot Pin
10. Trigger
11. Pistol Grip





## 4.0 CARE & CLEANING

---

Your firearm should be cleaned before and after every use. Regular cleaning is important for your firearm to operate correctly. Cleaning your firearm requires it to be field stripped so you can remove carbon, fouling, dust and debris, and add lubrication.

Additional care and cleaning are required when operating the firearm in:

### **DUSTY AND SANDY AREAS**

- Clean the firearm before and after firing and/or at least once per day.
- Reduce excess lubrication to avoid dust, dirt, or sand sticking to the lubrication and causing additional friction and wear in the moving parts.
- Keep the firearm covered whenever possible.

### **TROPICAL CONDITIONS (HOT AND HUMID)**

- Clean the firearm before and after firing and/or at least once per day.
- Keep steel parts well oiled, and inspect for rust at least once per day.
- After handling, wipe the firearm down with an oiled cloth to remove precipitates, which will accelerate corrosion.

### **ARCTIC CONDITIONS**

- Clean the firearm before and after firing and lubricate sparingly.
- Cycle the firearm frequently to prevent the mechanism from freezing.

## 4.1 LUBRICANTS

---

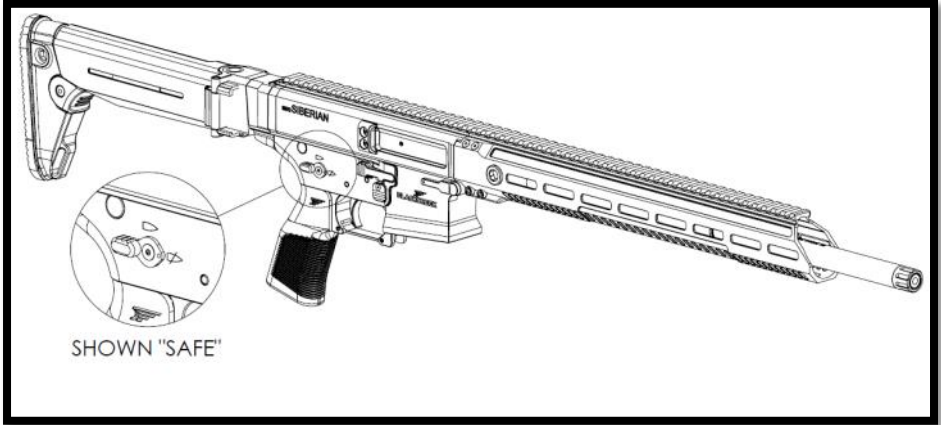
Any number of lubricating and/or off the shelf gun cleaning oils, greases, or solvents can be used on the SRV2 Siberian. BlackCreek recommends a CLP for mechanical components, which cleans, lubricates, and protects your firearm.

## 4.2 FIELD STRIPPING

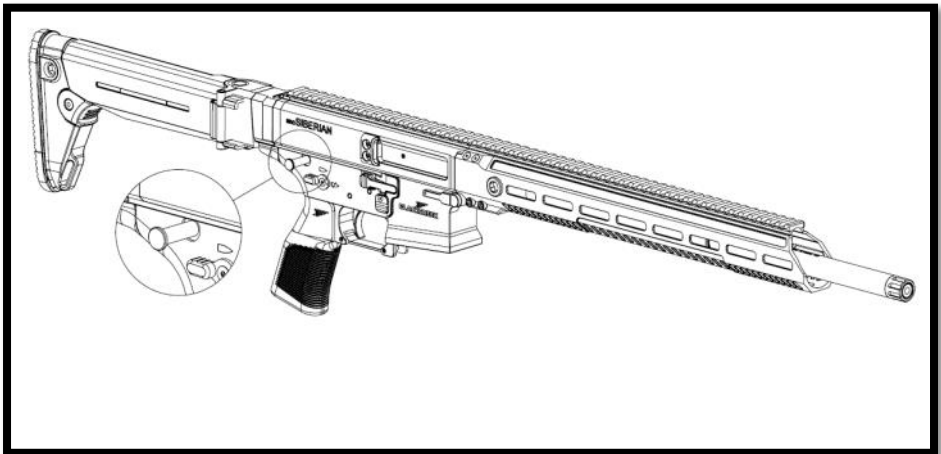
---

In order to properly clean your firearm, it must be field stripped. "Field stripped" is the term for when the bolt is removed from the action for cleaning. This is the minimum level of disassembly required to properly clean your firearm.

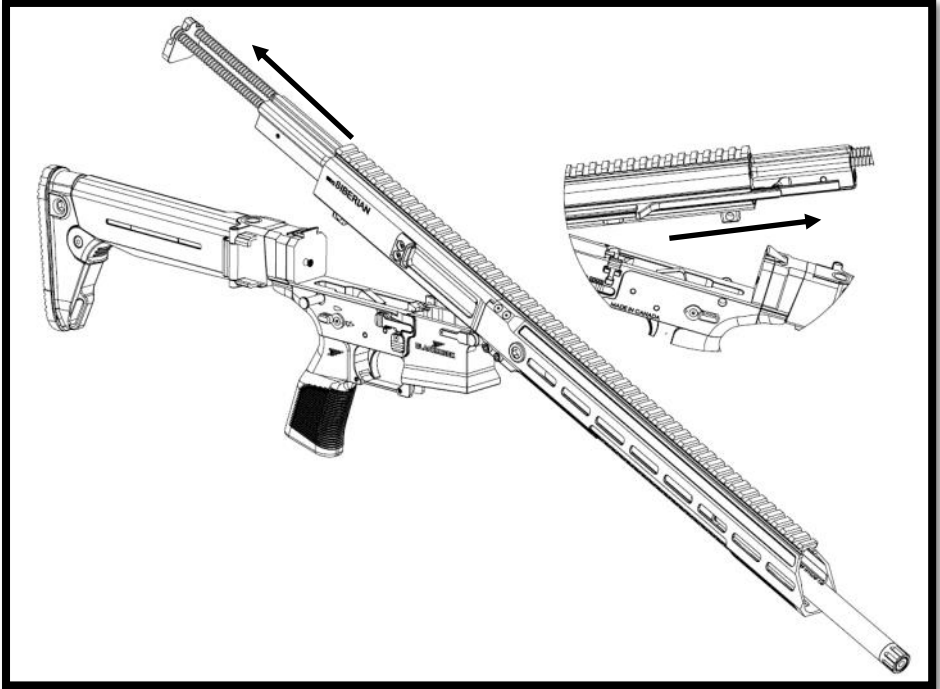
**ALWAYS BEGIN A FIELD STRIP BY PROVING THE FIREARM SAFE AND ENGAGING THE SAFETY. ALWAYS WEAR EYE PROTECTION AND GLOVES WHEN FIELD STRIPPING YOUR FIREARM.**



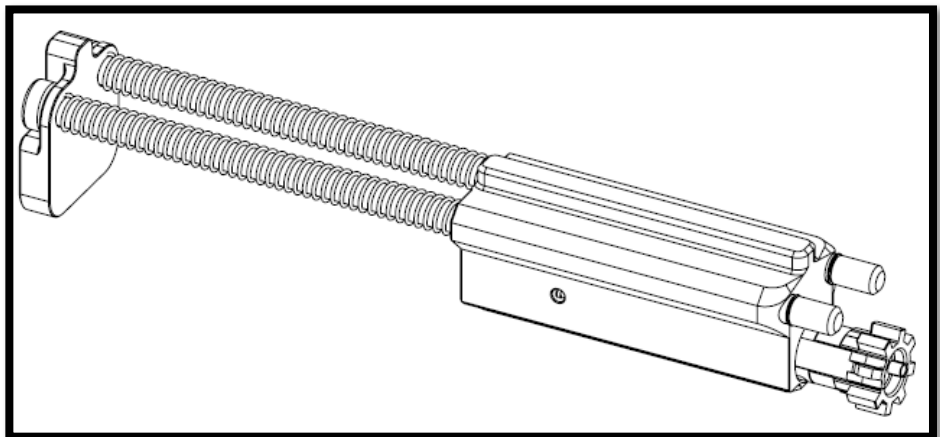
1. Once you have ensured your firearm and surroundings are safe and clear of ammunition, place the Safety Selector into the "SAFE" position, as shown above. Ensure the bolt carrier group is forward and not held back with the bolt catch.



2. Push the Takedown Pin from the left side of the rifle to allow the upper receiver to be released from the lower receiver. The Takedown Pin may be stiff, and a tool may be required to assist in removal.

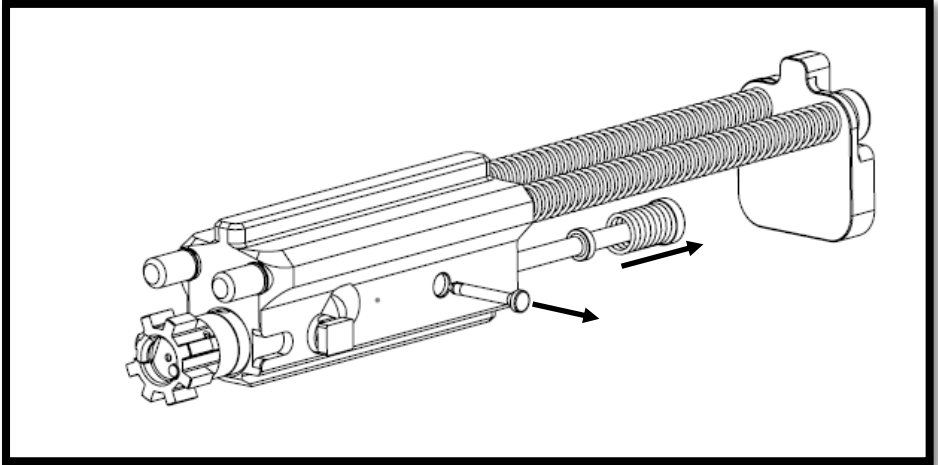


3. Pivot the Upper Receiver away from the Lower Receiver. Charge back the Charging Handle to remove the Bolt Carrier Group from the Upper Receiver. The dust cover will slide out from the left side of the upper receiver if pulled back far enough. Push the dustcover forward before closing the receivers.

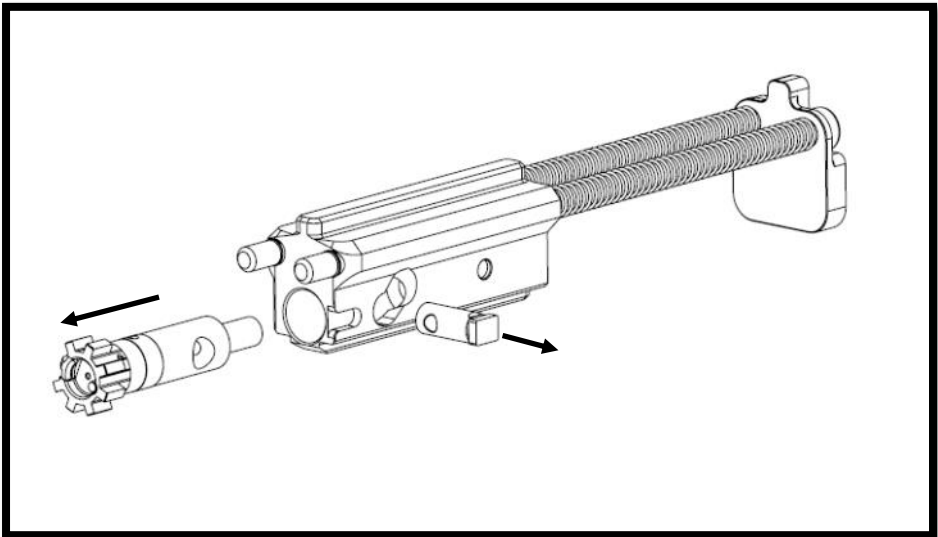


4. The Bolt Carrier Group is now fully removed from the firearm. The firearm is now field stripped and ready for routine cleaning.

### 4.3 FURTHER DISASSEMBLY



5. To access the firing pin, remove the firing pin retaining pin by lightly punching it out from the right side of the carrier. The firing pin and spring will pop out the backside of the carrier.



6. You can now remove the cam pin and the bolt from the carrier for in-depth cleaning of the extractor, ejector, bolt, and internals of the carrier.

## 4.4 CLEANING

---

Once your firearm is field stripped, you can begin to clean:

1. Spray CLP or a firearm cleaning solvent on the bore, chamber, barrel, locking lugs, and all other areas where carbon, fouling, corrosion, or dirt is visible or could potentially build up. Let the solvent sit for 5 minutes or as per the manufacturer's instructions.
2. Use a correctly sized bore brush to break up carbon in the bore.
3. Use a cleaning rod with a cleaning patch and run it through the barrel until all fouling is removed and the patch runs through the barrel clean.
4. Use a patch to remove all fouling and excess oil from the chamber, and locking lugs.
5. Remove all carbon and brass deposits from the bolt face and lugs.
6. Clean the extractor groove and remove all brass shavings.
7. Check the extractor for wear and spring tension. Replace if necessary.
8. Clean carbon and debris from bolt surface.
9. Wipe down bolt shroud, firing pin spring and firing pin.

## 4.5 LUBRICATION

---

Use CLP or a lubricating oil/grease for firearms to lubricate your firearm after cleaning. Do not use lubricants containing graphite as graphite can cause damage to aluminum alloys.

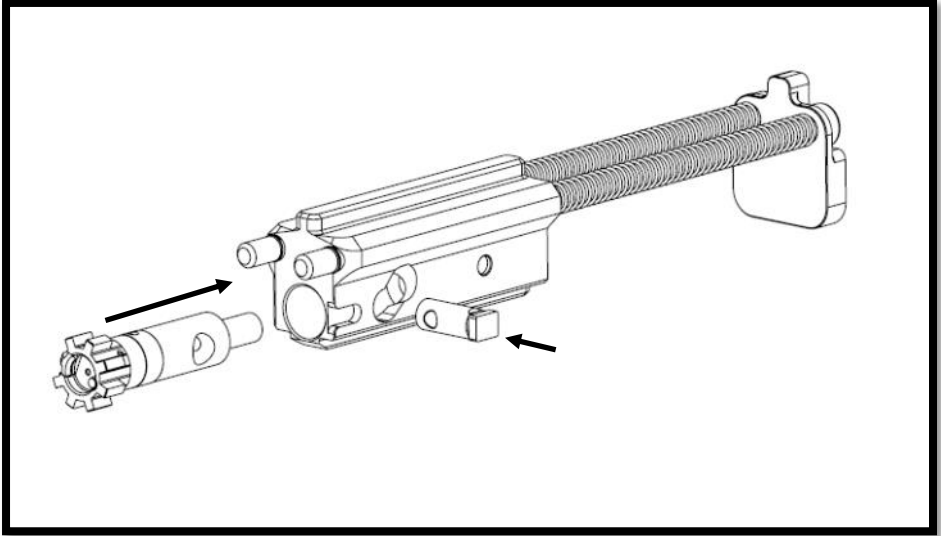
1. Lightly grease riding surfaces on the bolt, recoil rods, and piston.
2. The trigger, hammer, bolt face and chamber should be cleaned, but any oil or grease should be wiped off immediately.

## 4.6 ASSEMBLY

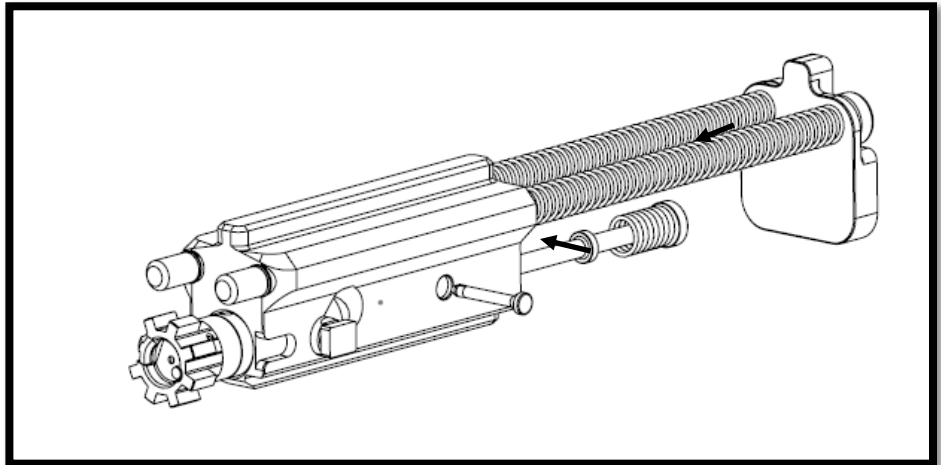
---

After cleaning and lubricating, the rifle is ready to reassemble.

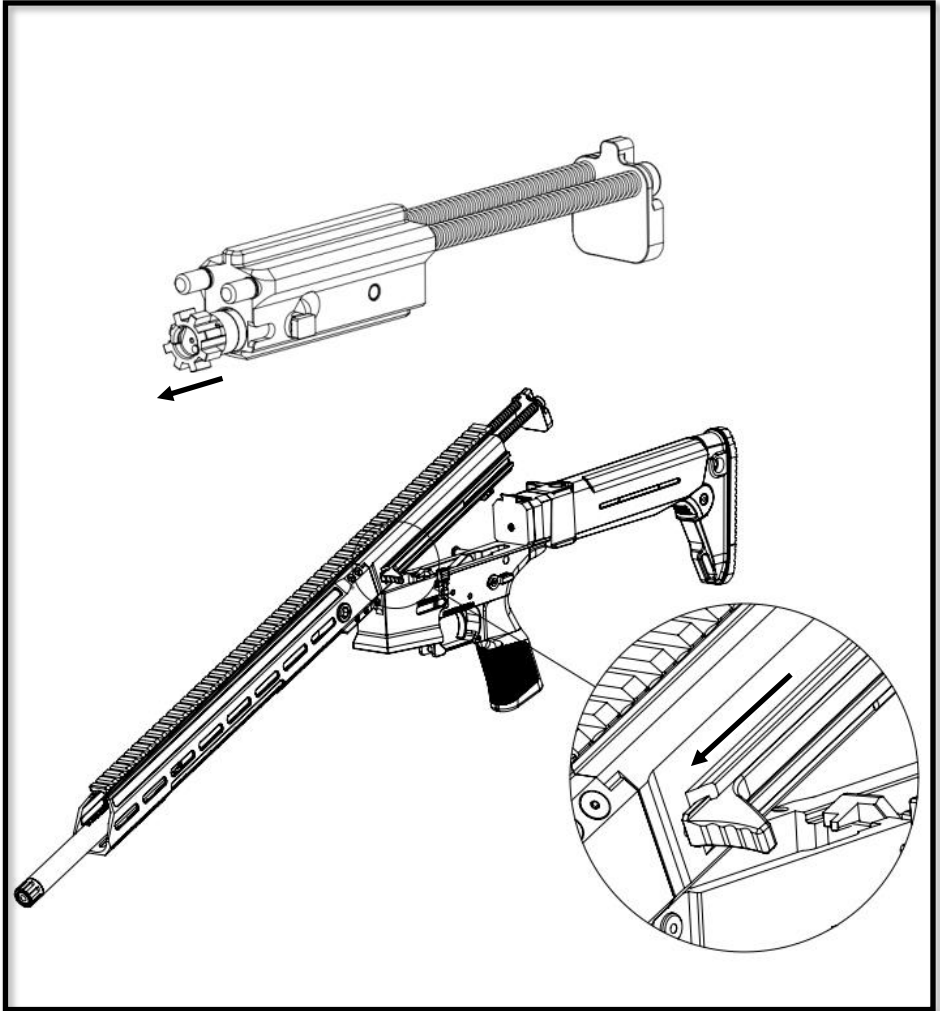
**ALWAYS BEGIN ASSEMBLY BY PROVING THE FIREARM SAFE. ALWAYS WEAR EYE PROTECTION AND GLOVES WHEN ASSEMBLING YOUR FIREARM.**



1. Insert the bolt into the carrier with the extractor facing to the right hand side. Then insert the cam pin into the bolt and carrier as shown above.



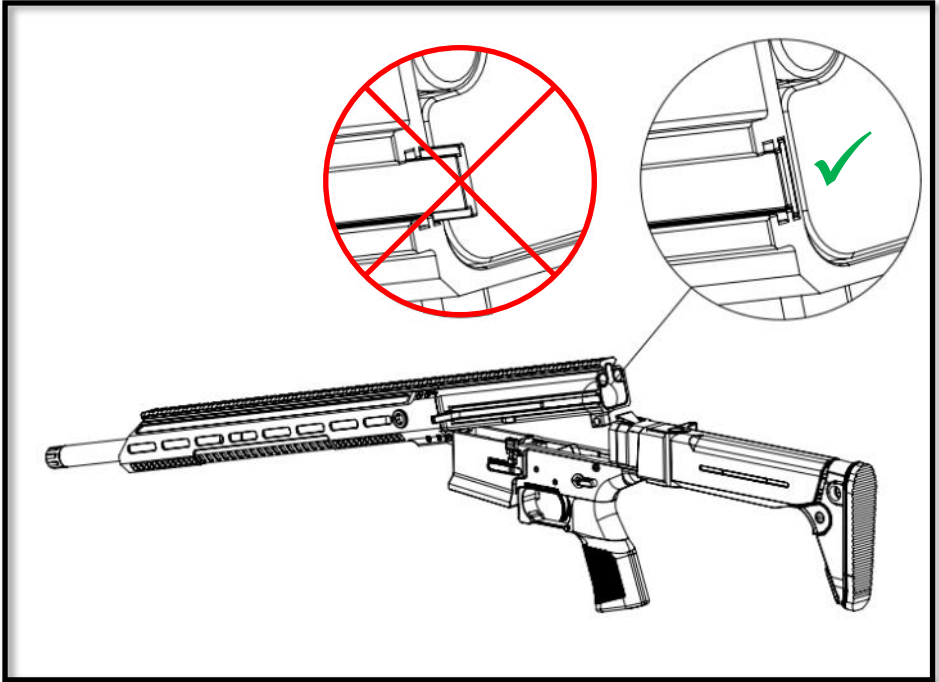
2. Insert the firing pin and spring into the rear of the carrier until it bottoms out and can't be inserted further. Then press the retaining pin from the left side of the carrier until the head sits flush with the outside of the carrier.



3. To reinstall the bolt carrier group into the upper receiver, the bolt needs to be fully extended from the carrier and the charging handle needs to be in the forward locked position. Then slide the bolt carrier group into the upper receiver until the takedown plate is flush with the back of the receiver.

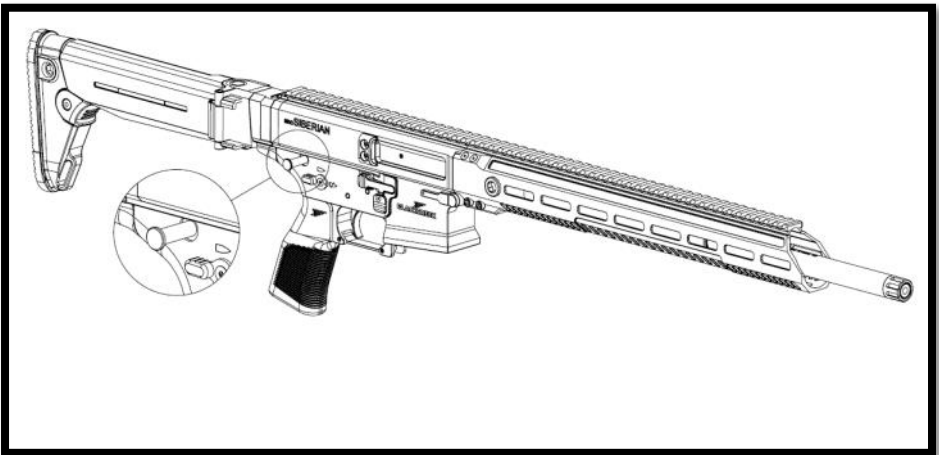
**TIP:** Look through the ejection port when installing the bolt carrier group and align the bolt with the barrel extension and the 2 guide rods with the guide rod holes in the upper receiver. Ensure the bolt is extended in the carrier.





4. Close the upper receiver onto the lower receiver.

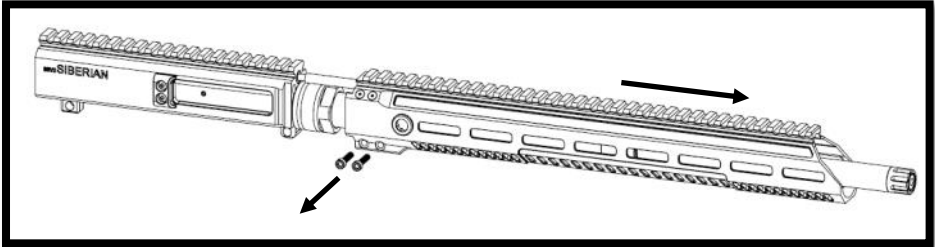
**NOTE: Ensure the dust cover is sitting flush with the rear of the upper receiver. If not sitting flush, simply press it in until it is flush.**



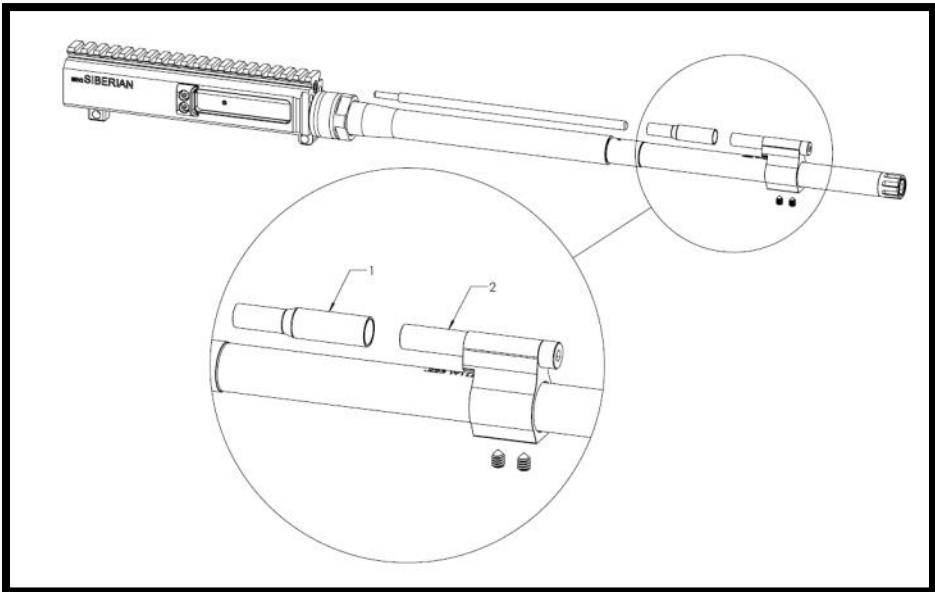
5. Press the takedown pin in and charge the rifle to ensure proper assembly.

## 4.7 GAS SYSTEM CLEANING

It is recommended to clean the SRV2 gas system approximately every 1,500 rounds to maintain maximum efficiency and reliability of the firearm.



1. Remove the handguard. Use a 9/64" Allen Key to remove the handguard screws. Once the screws are removed, the handguard can slide off the barrel nut. The re-installation torque for the handguard screws is no more than 20in-lb.



2. Remove the gas block set screws using a 3/32" Allen Key. Once the screws are removed, remove the gas block, piston, and piston rod from the assembly. Apply medium strength threadlocker (blue) to the gas block set screws when re-installing and tighten firmly. Use a carbon removing solvent and thoroughly clean the piston (1) and the gas block (2). Also ensure the barrel is cleaned and any carbon is removed from the gas port and gas block journal.

## 5.0 FUNCTION TEST


---

Test the function of the firearm after assembly, with the magazine removed, as follows:

- **PROVE THE FIREARM SAFE PRIOR TO FUNCTION TEST.**
- Put the safety selector on “SAFE” and squeeze the trigger. The hammer should not operate.
- Put the safety selector on “FIRE” and squeeze the trigger. The hammer should strike the firing pin.
- Cycle the action fully and repeat.

## 6.0 SAFETY SELECTOR

---

When the safety is sitting in the horizontal (  ) position, it is on “SAFE”. Always attempt to place the firearm safety into “SAFE” when loading, unloading, handling, or not ready to fire.

## 7.0 FIREARM OPERATION

---

The operation of this firearm should only be performed by persons who are trained to do so. The operational instructions in this manual are a guide for safe use but are not meant to replace the requirement of formal training.

### 7.1 PROVING THE FIREARM SAFE

---

Making or proving the firearm “SAFE” is a technique that ensures there are no rounds or other obstructions in the chamber or magazine of the firearm so it can be handled and/or transported safely. To prove the firearm safe, follow these steps:

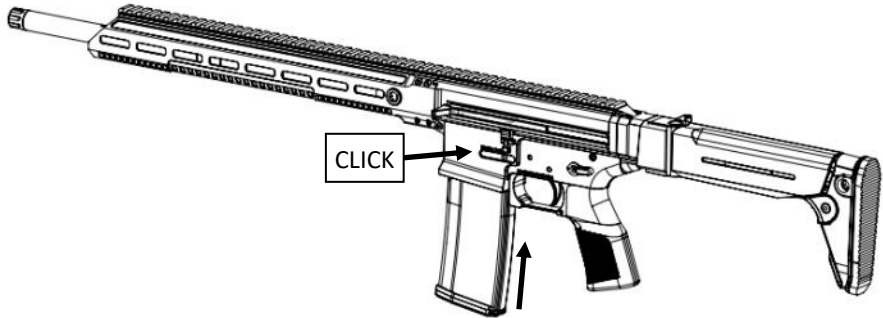
1. Assume the firearm is always loaded and maintain safe muzzle control.
2. Engage the safety if possible.
3. Keep your finger off the trigger.
4. Remove the magazine.
5. Unlock the bolt and pull rearward.
6. Visually and physically check to ensure that the chamber and feed path are clear of any ammunition.

## 7.2 LOADING

---

Loading is a term that is used to describe when the magazine is inserted into the magwell of the rifle. To load the firearm, follow these steps:

1. Prove the firearm is safe as per section 7.1.
2. With the firearm pointed in a safe direction, push the magazine (bullets facing forward), into the magazine well until the magazine catch engages with a positive click.
3. Pull down on the magazine to ensure it is locked in place properly.



## WARNING—AMMUNITION NOTICE

Only load your firearm with clean, high quality, factory made ammunition. Do not load ammunition that is dirty, wet, corroded or damaged. The SRV2 Siberian is designed and tested using most commercially available ammunition. Should you encounter issues with an ammunition, try another brand and contact BCL directly.

Black Creek Laboratories specifically dismisses any responsibility for any damage or injury caused in connection with, or as a result of, the use of any non-factory ammunition. Any damage caused by non-factory-made ammunition voids all warranties. Reloading ammunition is a strict science that can be extremely dangerous if done improperly. Only use ammunition that complies with SAAMI or similar specifications, unless otherwise directed by Black Creek Laboratories (such as for international exports).

### 7.3 READY

---

Ready or “making ready” is the term used to describe when a round is chambered. To make ready, follow these steps:

1. Ensure the magazine is seated properly.
2. Charge the action completely rearward by using the charging handle located on the left side of the rifle.
3. Release the charging handle completely and allow the bolt to chamber a round entirely under its own force.
4. Place the rifle on safe. The rifle is now “READY”.

### 7.4 UNLOADING

---

1. Attempt to place the safety selector on SAFE. The hammer needs to be cocked back in order to be placed on SAFE.
2. Press the magazine release button and remove the magazine.
3. Charge the action completely rearward with the charging handle.
4. Press the lower lever button on the bolt catch (refer to section 3.0) to lock the action open.
5. Observe the feed path, chamber, and bore is clear of cartridges.

### 7.5 IMMEDIATE ACTION ON MALFUNCTION

---

A malfunction is a failure of the firearm to function correctly. Malfunctions are caused by procedural or mechanical failures of the firearm, magazine, operator, or ammunition. Proper care, cleaning, and maintenance can mitigate mechanical malfunctions and identify problems before they occur. If a firearm fails to fire, the immediate action is: **Stop shooting and keep rifle pointed at target for 60 seconds in case of hang fire.**

After you wait 60 seconds inspect your firearm. Check to see if you have unusual chambering, misfire, failure to extract, unburned powder residue, abnormal sounding and/or unusual feeling shot. Sometimes improper ammunition and/or chambering leads to a projectile not exiting the barrel after firing. Firing a round into a blocked barrel is extremely dangerous and can cause serious injury and/or death.

Initial corrective action:

- Unload the rifle and make it SAFE.
- Check to ensure the previous cartridge was extracted properly.
- Check to ensure a new cartridge was pushed into the chamber.
- Check the magazine to ensure that it is fully seated and locked in place while firing.
- Examine the action and chamber of the firearm for any signs of failure.

- If a live round or empty casing is in the receiver or chamber, remove the magazine.
- Clear any obstruction.
- Check to see if the magazine is empty.
- Change the magazine.
- Re-aim and continue firing.
- If the firearm fails to fire, take further corrective action.

## 8.0 TROUBLESHOOTING

PROBLEM	COMMON CAUSE	CORRECTIVE ACTION
Failure to Fire (misfire)	<ul style="list-style-type: none"> <li>• Safety Selector is on SAFE</li> <li>• Improper assembly of the Firing Pin/damaged Firing Pin</li> <li>• Hard cartridge primer</li> <li>• Excessive carbon fouling on Bolt face and/or Firing Pin</li> <li>• Damaged Trigger or Hammer</li> <li>• Failure to chamber a round</li> </ul>	<ul style="list-style-type: none"> <li>• Move safety selector to Fire</li> <li>• Ensure assembly is correct</li> <li>• Clean bolt thoroughly</li> <li>• Remove any carbon fouling</li> <li>• Check ammunition/try another type of cartridge</li> <li>• Inspect trigger group for damage</li> </ul>
Bolt Won't Unlock from Chamber	<ul style="list-style-type: none"> <li>• Dirty bolt</li> <li>• Dirty/damaged barrel</li> <li>• Gas system failure</li> <li>• Improper ammunition</li> </ul>	<ul style="list-style-type: none"> <li>• Clean bolt and chamber</li> <li>• Ensure ammunition is correct</li> <li>• Remove gas block and clean</li> </ul>
Failure to Extract	<ul style="list-style-type: none"> <li>• Broken extractor or spring</li> <li>• Dirty bolt or chamber</li> <li>• Dirty or corroded ammunition</li> <li>• Bad ammunition</li> </ul>	<ul style="list-style-type: none"> <li>• Remove bolt and extractor and check for any wear</li> <li>• Clean chamber and bolt</li> <li>• Replace extractor spring</li> </ul>
Failure to Feed	<ul style="list-style-type: none"> <li>• Defective magazine</li> <li>• Magazine not correctly loaded</li> <li>• Feed speed too slow/didn't charge correctly</li> <li>• Under gassed system/dirty gas block</li> </ul>	<ul style="list-style-type: none"> <li>• Clean or replace magazine</li> <li>• Firmly press the magazine up into the magwell</li> <li>• Release the charging handle at the rear. Do not slowly chamber ammo</li> <li>• Clean gas system</li> <li>• Ensure proper firing stance</li> </ul>
Failure to Eject	<ul style="list-style-type: none"> <li>• Broken Ejector Spring</li> <li>• Broken Extractor</li> <li>• Damaged bolt face</li> </ul>	<ul style="list-style-type: none"> <li>• Remove bolt and ensure all parts are correctly assembled and operational</li> <li>• Clean bolt face and chamber</li> </ul>

## 9.0 MAGAZINES

---

Your firearm may come with a plastic or steel magazine. The SRV2 Siberian is designed to use AR15 magazines.

## 10.0 LIMITED LIFETIME WARRANTY

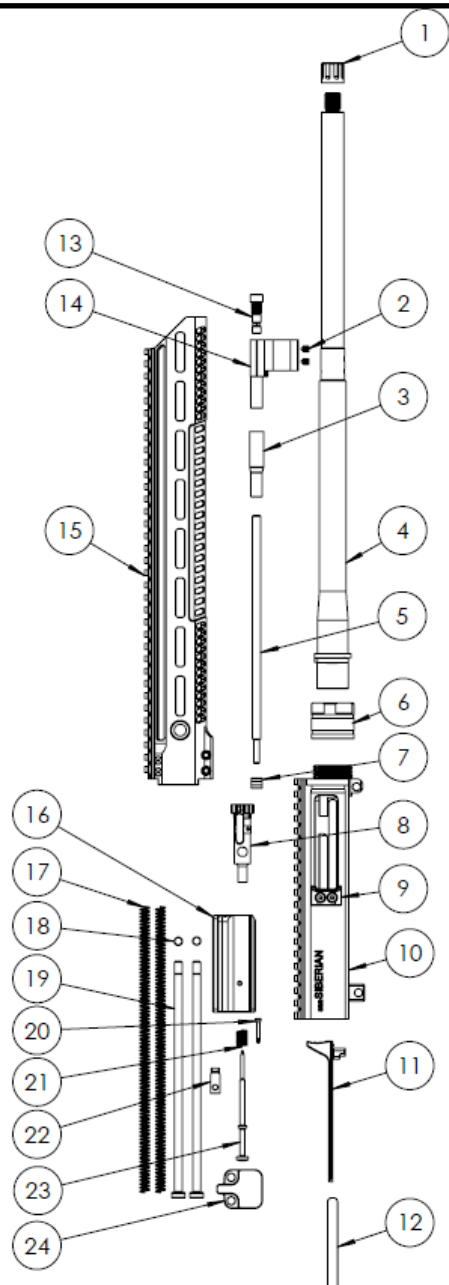
---

BlackCreek warrants to the original retail purchaser of a new firearm from BlackCreek that such firearm shall be free from defects in material, workmanship, and mechanical function. Repair or replacement of the firearm is at the discretion of Black Creek Laboratories. The Purchaser's remedies under this warranty are limited to repair or replacement of the firearm; firearm must be registered, and a valid warranty claim must be submitted. Black Creek Laboratories will not provide cash, credit, or refund. If Black Creek Laboratories opts to replace the firearm, Black Creek Laboratories will keep the firearm that it replaces. Black Creek Laboratories does not fulfill warranties against any type of defect to the firearm that Black Creek Laboratories did not cause, including but not limited to damage or defects arising out of:

- Improper maintenance and care,
- Accidents, abuse, or misuse,
- Normal wear; tear; and/or corrosion,
- Barrel obstruction,
- Unauthorized adjustments, repairs, or modifications,
- Improper ammunition.

## 11.0 SPARE PARTS DIAGRAM

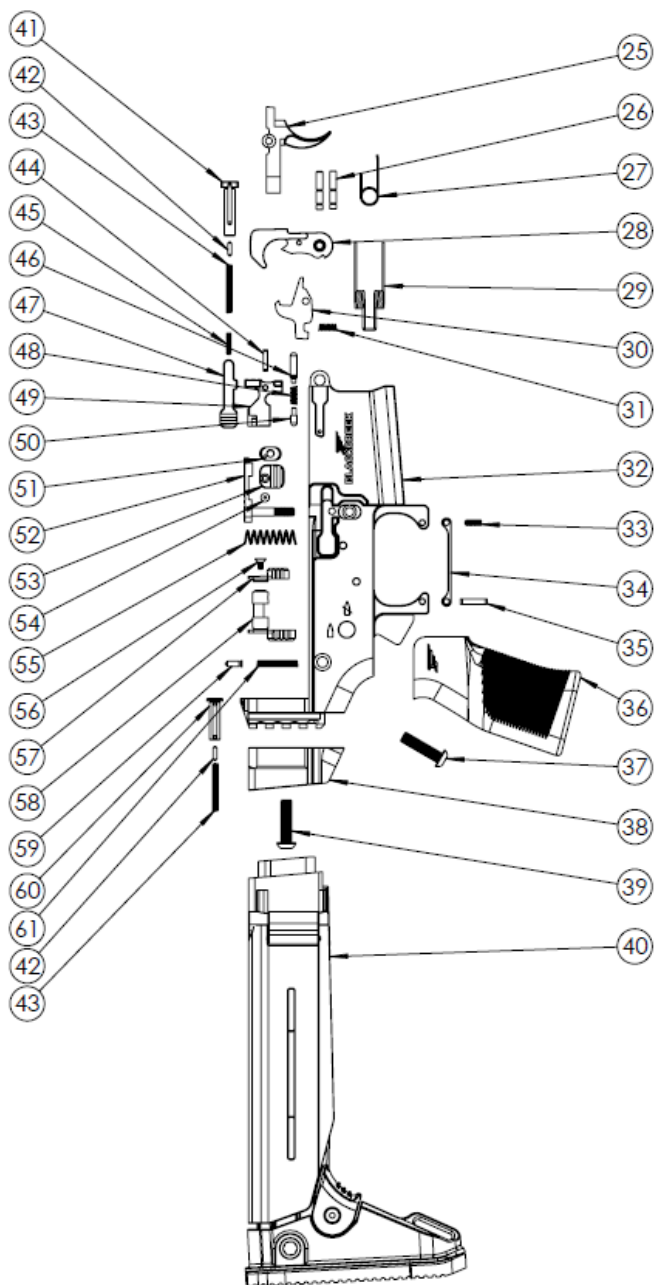
---





Item Number	Part Name	Quantity
1	Thread Protector	1
2	Gas Block Set Screw	2
3	Piston Cylinder	1
4	Barrel	1
5	Piston Rod	1
6	Barrel Nut	1
7	Piston Bushing	1
8	Bolt Assembly	1
9	Shell Deflector	1
10	Upper Receiver	1
11	Charging Handle	1
12	Dust Cover	1
13	Gas Block Regulator	1
14	Gas Block	1
15	Handguard	1
16	Bolt Carrier	1
17	Recoil Spring	2
18	Guide Rod Retainer Ring	2
19	Guide Rod	2
20	Firing Pin Retaining Pin	1
21	Firing Pin Spring	1
22	Cam Pin	1
23	Firing Pin	1
24	Takedown Plate	1

## 11.0 SPARE PARTS DIAGRAM



Item Number	Part Name	Quantity
25	Trigger	1
26	Trigger Pin	2
27	Trigger Spring	1
28	Hammer	1
29	Hammer Spring	1
30	Disconnecter	1
31	Disconnecter Spring	1
32	Lower Receiver	1
33	Trigger Guard Set Screw	1
34	Trigger Guard	1
35	Trigger Guard Pin	1
36	Pistol Grip	1
37	Grip Screw	1
38	Magpul Zhukov Yugo Adapter	1
39	Stock Adapter Screw	1
40	Magpul Zhukov Yugo Stock	1
41	Pivot Pin	1
42	Pivot & Takedown Pin Detent	2
43	Pivot and Takedown Pin Spring	2
44	Bolt Catch Pin	1
45	Ambi Bolt Catch Paddle Set Screw	1
46	Ambi Bolt Catch Plunger	1
47	Ambi Bolt Catch Paddle	1
48	Bolt Catch Spring	1
49	Bolt Catch	1
50	Bolt Catch Plunger	1
51	Mag Catch Button	1
52	Mag Catch Assembly	1
53	Mag Catch Button Face Plate	1
54	Mag Catch Button Screw	1
55	Mag Catch Spring	1
56	Safety Selector Screw	2
57	Safety Selector Lever	1
58	Safety Selector Assembly	1
59	Safety Selector Detent	1
60	Takedown Pin	1
61	Safety Selector Detent Spring	1



**Ontario, Canada**  
**[www.blackcreeklabs.com](http://www.blackcreeklabs.com)**